

Capital Bond 2018

Rye Neck Schools
LEARN • ACHIEVE • LEAD

Vote: February 13, 2018

Superintendent's Notebook

by Barbara Ferraro, Ed.D.

The Rye Neck School District is in the final phase of a long and careful decision-making process that will have a major impact on the future of students' education – right through high school and beyond.

Three public hearings were scheduled for January 10, January 24 and February 7 on the district's proposed \$27.6 million capital improvement plan, which will significantly upgrade our school facilities and greatly improve educational opportunities for students.

Voters will be asked to vote on two independent propositions, each requiring a majority vote to pass. The first proposition calls for \$6.28 million to replace flat roofs at all three of our school facilities. The second proposition calls for \$21.325 million to expand and upgrade our Middle School/High School campus by building a new, eight-classroom wing called the Collaborative Science Center, as well as a new Middle School gymnasium. Propositions that are approved will be financed by the school district through the issuance of long-term bonds.

The first proposition is aimed, quite literally, at keeping the roof above the heads of our students, teachers and staff members. The flat roofs at each of our schools are well beyond the end of their useful lives and it is becoming enormously expensive to constantly patch and repair them. Many of you have probably faced similar decisions with the roof of your own home – reluctantly choosing to spend the money now, knowing that nature will eventually make that decision for you, probably sooner rather than later.

The second proposition – to expand and upgrade the Middle/High School campus – is a long-term investment to enhance the quality of education that your children, and future generations of Rye Neck students, will experience.

For additional information please visit the district website, www.ryeneck.org, including a PowerPoint presentation concerning the Capital Improvement Bond Referendum.

Voters will be able to cast their ballots on February 13 at the High School library between the hours of 7 a.m. and 9 p.m.



PROPOSITION 1: Roofing Improvements \$6,280,000

Replace the entire flat roof at the Middle/High School campus, as well as the flat roof sections at the F.E. Bellows and Daniel Warren Elementary Schools.



PROPOSITION 2: Academic Improvements \$21,325,000

Expand and upgrade the Middle/High School campus by constructing an eight-classroom addition to house the Collaborative Science Center for STEAM education, as well as building a new Middle School gymnasium at the current athletic facility.

Vote February 13, 2018 from 7 a.m. - 9 p.m. • MS/HS Library

Facts At-A-Glance

The Rye Neck Union Free School District is seeking community approval for a \$27.6 million bond proposal to replace aging school roofs and to expand and upgrade academic facilities at the combined Middle/High School campus. Voters will be asked to vote on two independent propositions, each of which requires a majority vote to pass.

Proposition 1 - Roofing Improvements

WHAT we need to do

- Replace the entire 122,000 square feet of flat roofing at the Middle/High School campus and Administration Building.
- Replace 10,000 square feet of flat roofing at F.E. Bellows.
- Replace 12,000 square feet of flat roofing at Daniel Warren.

WHY we need to do it

- Flat roofs at each school are more than 23 years old.
- \$764,000 spent since 2009 to patch roof leaks and repair masonry.
- Timely replacement avoids costly building infrastructure issues.
- Roof failure could cause significant internal damage to buildings and create long-term disruptions to academic activities.

HOW MUCH will it cost?

Middle/High School	\$5,020,000
F.E. Bellows	\$1,010,000
Daniel Warren	\$125,000
Administration Building	\$125,000
TOTAL ROOFING IMPROVEMENTS	\$6,280,000

Proposition 2 - Academic Improvements

WHAT we need to do

- Build the Collaborative Science Center – a new eight-classroom wing to house STEAM (science, technology, engineering) classes.
- Build a second, smaller gymnasium for Middle School physical education classes and modified sports.
- Replace Performing Arts Center (PAC) seating.

WHY we need to do it

- Meet the surging demand for advanced STEAM education.
- Enhance college and career prospects for high school students.
- Eliminate the scheduling gridlock caused by the MS and HS sharing a single gym.
- Ease campus-wide overcrowding by returning old science classrooms to general use.
- PAC seating is at the end of its useful life and replacement parts are no longer available.

HOW MUCH will it cost?

HS Collaborative Science Center	\$14,675,000
MS Gymnasium	\$6,650,000
TOTAL ACADEMIC IMPROVEMENTS	\$21,325,000

Collaborative Science Center



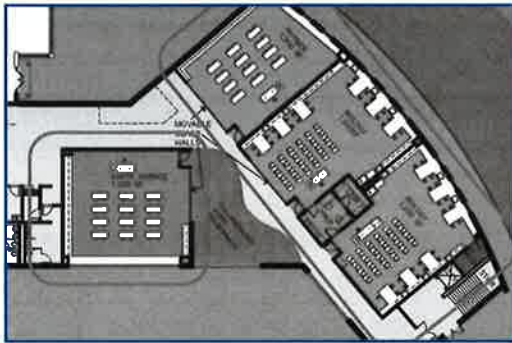
Designed for leading-edge STEAM education

- Eight new classrooms and lab spaces designed and equipped for science, technology, engineering and related subjects.
- Open, flexible work spaces to encourage collaborative teaching and learning.



Meeting the demand for STEAM

- All 880 MS/HS students will study compulsory biology, chemistry and other science courses at the new center.
- Enrollment in basic and advanced engineering courses has more than doubled since 2013.
- New HS robotics courses have twice as many applicants as available spots.



Full STEAM ahead?

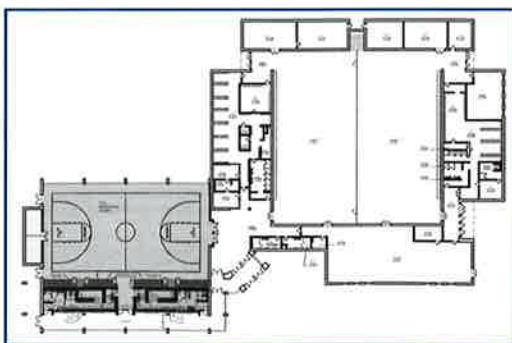
- The full potential of the Collaborative Science Center will never be realized unless scheduling bottlenecks are eliminated.
- STEAM courses with back-to-back periods for classroom and hands-on lab work, are especially difficult to fit into HS schedules.
- MS PE classes create a campus-wide scheduling gridlock at the athletic facility, where nearly 900 MS and HS students are forced to share a single gym for mandatory PE classes.

Middle School Gymnasium



Freeing gridlocked schedules

- Primary purpose of the new, smaller MS gym is to eliminate chronic scheduling bottlenecks across the campus.
- By moving all MS PE classes to the new gym, HS students will be able to schedule their PE requirements in the main gym during any period of the day.
- This flexibility will enable HS students to schedule higher-level coursework, including STEAM courses.
- HS students gain additional opportunities to strengthen credentials for college admission and career prospects.



Enhancing athletic opportunities

- New MS gym – with its own locker rooms and bleachers – will host modified sports and other special events.
- Currently overcrowded PE classes will shrink to a safe and manageable size.
- Working together, the Collaborative Science Center and new MS gym will eliminate scheduling gridlock and increase access to educational opportunities for all students.

Board of Education
 Patty Nashelsky, President
 Deborah Aulfinger, Vice President
 Allen Hodys, Trustee
 Pietro Fasolino, Trustee
 Dan Wice, Trustee
 Jennifer Rubin, Trustee

Dear Rye Neck Resident

Administration 914-777-5252
 Dr. Barbara Ferraro, Superintendent
 Dr. Kimberly Bucci, Assistant Superintendent for Business

Vote February 13, 2018 from 7 a.m. - 9 p.m. • MS/HS Library

Financial Facts

PUTTING THE COSTS IN PERSPECTIVE

- Proposed \$27.6 million investment is less than this year's annual operating budget of \$40 million.
- Our students will realize educational benefits from these investments over the course of decades.
- Rye Neck's facilities and programmatic capabilities will be brought into line with other local school districts.

FINANCING ENVIRONMENT IS ATTRACTIVE

- Interest rates remain near historic lows for capital projects.
- District's outstanding debt of \$12.6 million is at the lower end, in terms of debt service per pupil, among school districts in the region.
- The district's financial position is strong, with six consecutive years of annual budgets under the state's tax levy cap.
- The district expects to receive state building aid on each project

PROPERTY TAX ESTIMATOR

- The following link may be used to estimate the change to school taxes; please be certain to select the correct tab at the top, Rye Town or Rye City

<http://admin.ryeneck.org/rn-webapplications/2017-taxcalculator/bondcalculator.htm>

